



# 2024-2025 Evening MBA PROGRAM HANDBOOK



**W. P. Carey School of Business  
Graduate Programs Office  
McCord Hall, 3rd Floor  
(480) 965-3332**

<https://wpcarey.asu.edu>

Admissions: [wpcareymasters@asu.edu](mailto:wpcareymasters@asu.edu)

Current Students: [wpcgrad@asu.edu](mailto:wpcgrad@asu.edu)

## TABLE OF CONTENTS

<b>W. P. CAREY OVERVIEW</b>	<b>3</b>
<b>INCLUSIVE EXCELLENCE AT W. P. CAREY</b>	<b>4</b>
<b>PROGRAM OVERVIEW</b>	<b>6</b>
<b>PROGRAM CURRICULUM</b>	<b>7</b>
Required Core Courses	7
Thesis Equivalency Course	7
Concentration Options	8
<b>ADMISSIONS</b>	<b>8</b>
<b>W. P. CAREY SCHOOL OF BUSINESS GRADUATE STUDENT CONDUCT AND PROFESSIONALISM POLICY</b>	<b>9</b>
Communication	9
Classroom	10
Co-curricular	10
Technology	11
<b>2024-2025 MASTER OF BUSINESS ADMINISTRATION ACADEMIC POLICIES</b>	<b>13</b>
Satisfactory Academic Progress	13
Course Completion Requirement	14
Probation	14
Discontinuation	14
Dismissal	15
Grade Appeal Process	15
<b>ACADEMIC INTEGRITY REQUIREMENT</b>	<b>15</b>
<b>W. P. CAREY TUITION REFUND POLICY</b>	<b>17</b>
<b>STUDENT RESOURCES</b>	<b>19</b>
Program Contacts	20
Career Services Center	20
Student Clubs and Organizations	21
Health and Wellness	21
<b>SCHOLARSHIPS AND FINANCIAL AID</b>	<b>22</b>

## WELCOME TO THE W. P. CAREY SCHOOL OF BUSINESS

Solutions for the planet mean developing problem-solvers from around the globe. From thousands of outstanding students who join us every year from around the world to our world-renowned faculty representing six continents, the W. P. Carey School welcomes diversity and encourages global thinking.

Grad school is a major undertaking, whether you're returning to school full-time or you're earning a degree while you work. At the W. P. Carey School, we're here to help you succeed in the classroom and beyond.

Whether you have questions about the curriculum, financial aid, or how to take advantage of career resources for W. P. Carey graduate students, you can get all the answers you need right here.

We measure success not by who we exclude, but [who we include](#), with one vision in mind:

We transform the world through access, excellence, and innovation in business knowledge. We are the W. P. Carey School of Business, where business is personal.

Check out our [news and research website](#) to learn more about our community's success.

### Rankings

The W. P. Carey School of Business delivers excellent quality and great value. It is one of the top business schools in the country, highly ranked for academics, groundbreaking research, and student outcomes. Read more about the [current rankings here](#).

### The Carey Code

I am a W. P. Carey Sun Devil:

- I contribute to our legacy and live our values of excellence, integrity, impact, and community
- I demonstrate that business is personal by treating others with respect and kindness
- I advocate for access and equal opportunity to create stronger organizations and inclusive societies
- I embrace and exhibit ethical business practices and lead others by example
- I champion fellow Sun Devils and volunteer when and what I can to promote their success

And, together, we will spark positive change in the world, by doing good while doing well.

## **INCLUSIVE EXCELLENCE AT W. P. CAREY**

At W. P. Carey, we say that “business is personal.” Each student, each faculty member, each employee matters, intrinsically, as a human being. Yet we also must recognize times where we as a community have fallen short of that ideal, and how historical prejudice and systemic racism have pushed members of our school to the margins.

We are committed to doing better, and unequivocally state our support of Black lives, Native communities, immigrants, members of the LGBTQIA+ community, people with disabilities, and others who live at the intersections. You are welcome at W. P. Carey, and this is what you can expect from us.

### **Inclusive Excellence Initiatives**

We embrace open access to education and opportunity for all students as being central to our mission.

- We believe that diversity is a necessary part of excellence, and reject any false opposition of diversity and merit.
- We support robust and respectful discussion of the most pressing issues in society from the wide variety of perspectives in our community.
- We respect, listen to, and center the voices of marginalized groups, and recognize that the impacts of our actions matter more than the intention.
- We are unequivocal in our support of underrepresented and historically marginalized groups, and will not tolerate discrimination or hate.

### **Diversity, equity, and inclusion (DEI) initiatives**

The initiatives below are a partial list of the many inclusive activities being pursued and considered at W. P. Carey.

Inclusive Excellence Committee - formed in response to ongoing police violence against Black Americans, the committee is now a permanent part of W. P. Carey; the group directs all Inclusive Excellence initiatives at W. P. Carey and serves as an advisory board to school leadership.

College Data Committee - this group is charged with compiling and distributing relevant Inclusive Excellence data for W. P. Carey; this includes diversity metrics, surveys, and benchmarking.

Inclusive Teaching & Learning Committee - a combination of faculty, staff, and student committee members working to integrate Inclusive Excellence principles into W. P. Carey curriculum and classrooms.

EI training for faculty and staff- SafeZONE and Microaggression training for staff to understand bias and create a more inclusive, allied, and safe environment; “To be Welcoming” training, in partnership with ASU and Starbucks, suggested for all staff; also exploring future mandatory training options for employees and students.

Diversifying purchasing - In concert with ASU purchasing and community groups, we are taking an intentional look at diversifying W. P. Carey purchases, including food, supplies, and services.

Inclusive onboarding - Human Resources is creating a booklet for new employees that includes employee resource groups and culturally relevant services, such as Black salons, doctors, and more.

Diversifying recruiting - Human Resources and student recruiting functions are in the early stages of identifying more inclusive recruitment practices, including expanded recruitment from HBCUs, continued involvement in the PhD Project, and more.

Expanded access to mentors - using the existing W. P. Carey mentorship program as a starting point, expand the number of qualified minority mentors for the undergraduate, graduate, and Executive Connections program.

W. P. Carey is also actively involved with the larger ASU community’s commitment to support Black students, faculty, and staff. [Read more](#) about university-led efforts.

### **Land Acknowledgement**

The W. P. Carey School of Business acknowledges the 22 Tribal Nations that have inhabited this land for centuries. Arizona State University's four campuses are located in the Salt River Valley on ancestral homelands of many Indigenous peoples, including the Akimel O’odham (Pima) and Pee Posh (Maricopa), whose care and keeping of these lands allows us to be here today and provide a guide for our relationship with these lands in the future. W. P. Carey acknowledges the sovereignty of these tribal nations and seeks to foster an environment of success and possibility for American Indian students, and to work alongside Indigenous people in business practices and acknowledges that supports Native experiences and prosperity.

[Graduate students can find community](#) through a number of organizations, including special interest groups and Inclusive Excellence focused events.

### **More resources:**

- [ASU Student Accessibility and Inclusive Learning Services](#)
- [Students with Families](#)
- [International Student Engagement](#)
- [Out @ ASU](#)
- [ASU Council of Coalitions](#)
- [Pat Tillman Veterans Center](#)

## PROGRAM OVERVIEW

**All MBA platforms within W. P. Carey School of Business are now S.T.E.M designated.**

The purpose of the W. P. Carey School of Business MBA program is to provide a solid foundation and knowledge base in the core business disciplines and to develop analytic capabilities, decision-making and leadership skill sets essential to making sound business decisions. Through a comprehensive business curriculum taught by world-renowned faculty, the W. P. Carey Evening Master of Business Administration expands students' leadership skills and helps them immediately impact their organizations.

In this innovative hybrid program, in-person classes are held one evening a week from 6:00pm to 9:45pm or two evenings a week from 6:00pm to 7:45pm or 8:00pm to 9:45pm. Students have the flexibility to choose. With a variety of electives and concurrent degree programs through partnership with other highly ranked ASU schools, students receive the competitive edge needed to reach their career goals. The curriculum is delivered in a case-based, team-oriented, and discussion learning environment. Elective courses provide additional depth and breadth, to enhance an area of emphasis, students' knowledge base and career goals.

The Evening Master of Business Administration is designed for working professionals seeking to continue working full-time while attending school. The program starts each academic year in August and January. Students starting in August can complete the Evening MBA program in 21 months while students starting in January can complete it in 24 months.

A Fast-track MBA program pathway is available for students who have completed a previous Masters degree in a specialized business discipline. Depending on the incoming discipline, students could earn an MBA in 12-18 months.

Students must complete all degree requirements within the maximum time limit. A student has six years for Masters in Business Administration; for doctoral, five years or ten years from comprehensive exams (whichever comes first).

The Master of Business Administration program is supported by each of the eight academic units within the W. P. Carey School of Business.

## PROGRAM CURRICULUM

For the standard Evening MBA Program, all required core courses are listed in the table below. The program core in addition to 15 credits of electives, makes the Evening MBA program a total of 49 credit hours.

Students who have earned a Specialized Masters degree from an accredited business school can pursue the Fast-Track MBA program which requires 31 credits to degree completion. The curriculum required will depend on the discipline a student brings into the program. The list of courses below is the foundation to the W. P. Carey MBA programs. A student's previous graduate program experience will determine which of the courses from the core list below will make up the 31 required credits for degree completion.

### Required Core Courses

Course	Description	Credits
WPC 591	Foundations of Business	1
MGT 588	Sources of Competitive Advantage	1.5
MGT 591a	Entrepreneurial Mindset (A): Personal Skills	.5
MGT 591b	Entrepreneurial Mindset (B): Collaborative Skills	.5
MGT 591c	Entrepreneurial Mindset (C): Resilience & Growth	.5
MGT 591d	Entrepreneurial Mindset (D): Creative & Des-Thinking	.5
MGT 591e	Entrepreneurial Mindset (E): Collective Initiatives	.5
MGT 591f	Entrepreneurial Mindset (F): Business Model You	.5
WPC 591	Career	.5
<a href="#">MGT 502</a>	Organizational Behavior	2.5
<a href="#">WPC 501</a>	Statistics for Business	2.5
<a href="#">ACC 502</a>	Financial Accounting	2.5
<a href="#">ECN 502</a>	Managerial Economics	2.5
<a href="#">SCM 502</a>	Operations and Supply Chain Management	2.5
<a href="#">MKT502</a>	Marketing Management	2.5
<a href="#">FIN 502</a>	Managerial Finance	2.5
<a href="#">CIS503</a>	Decision Making w/ Data Analytics	2.5



<a href="#">ACC 503</a>	Managerial Accounting	2.5
<a href="#">LES 582</a>	Ethical Issues for Managers	2.5
<a href="#">MGT 589</a>	Strategic Management (capstone)	3

## Thesis Equivalency Course

MGT 589: Strategic Management uses case method, experiential and discussion learning, and applied projects to examine how general managers seek to create and maintain competitive advantage. This course considers how managers determine strategic direction and lead the strategy process. Recognizing that most general management decisions are inherently multi-functional in nature, we employ explicit frameworks for strategic action while introducing you to the challenges that accompany decisions that involve the entire enterprise. This course is the thesis equivalent, meant to utilize what you have learned throughout your MBA program.

## Concentration Options

Although not required for graduation, students have the option to customize their electives to earn a concentration in at least one of seven areas: Marketing, Supply Chain, Finance, International Business, Leadership, Entrepreneurship, Artificial Intelligence, and Business Data Analytics.

## Admissions

Students can learn about what a competitive applicant to the Evening MBA program would look like by viewing the [class profile](#) page. Here students will be able to compare their own personal profile with our most recent incoming class. A student needs to be as close as possible or over the previous class average to be a competitive candidate.

Students are asked to complete an online application which includes

- A professional resume
- Answers the essay questions
- Legible copies of unofficial transcripts
- Contact information for 2 professional references
- The application fee

Supplemental Materials Include

- GMAT or GRE Scores (if applicable, not required)
- Online recommendation forms submitted by your recommenders
- Official English Proficiency scores (if applicable)

Fall 2024 Application Deadlines:

Round 1: October 1, 2023  
Round 2: December 1, 2023  
Round 3: February 1, 2024



Round 4: April 1, 2024

Round 5: July 1, 2024

#### Fall 2025 Application Deadlines

Round 1: December 1, 2023

Round 2: February 1, 2024

Round 3: April 1, 2024

Round 4: July 1, 2024

## **W. P. CAREY SCHOOL OF BUSINESS GRADUATE STUDENT CONDUCT AND PROFESSIONALISM POLICY:**

<https://gradstudents.wpcarey.asu.edu/student-resources/professionalism-policy>

We, the students of the W. P. Carey Master's programs, are committed to maintaining the highest levels of honesty, integrity, and professional courtesy for ourselves and amongst our classmates. We believe that ethical behavior is not only the cornerstone of a good academic program, but of good business as well. As such, we are steadfast in our commitment to the following principles:

- Academic Integrity — We view the W. P. Carey Academic Integrity Policy as a living, breathing document, not just concepts on a page. As such, we are resolute in ensuring that we abide by the principles contained within, both in letter and in spirit. Furthermore, we will hold our classmates to the same high standards to which we hold ourselves.
- Consideration of Others — As W. P. Carey students, we believe that we should treat others as we wish to be treated. To this end, we will be considerate of classmates, professors, and recruiters in all aspects. Furthermore, we will constructively add to the collaborative environment by helping and encouraging others.
- Professionalism — As W. P. Carey students, we believe that the behaviors we practice today will become a habit in the future. To that end, we are committed to act in a professional manner in all school settings, including classes, networking events, and interviews. We will be cognizant of the fact that we are representing the program and our classmates at all times.

### **Professionalism Expectations**

Professionalism, broadly speaking, includes ethical decision-making, consideration of others, and demonstration of personal accountability. Exhibiting professional behavior is integral to a positive learning environment within the university and promotes innovation, inclusive excellence, integrity, and mutual respect for students, faculty, and staff.

W. P. Carey students are expected to treat others as they wish to be treated. Students will be considerate of classmates, professors, staff and recruiters in all aspects and commit to acting in a professional manner in all school settings, including classes, sponsored events, and interviews.

### **Communication**

All communication, whether oral or written, should be in a professional tone and format. In your courses your instructor should set forth procedures for communication including posted office hours, making appointments, and providing contact information.

Examples of behaviors expected when participating in activities associated with W. P. Carey School of Business:

- Communicate clearly, promptly and in a respectful manner with students, staff, colleagues, instructors, and the public.
- Participate in verbal and written interactions in an equitable and respectful manner.
- Maintain professionalism in interpersonal relationships, manner, appearance, hygiene and communication (including electronic communication).
- Accept feedback and make good faith attempts to improve performance based on feedback.

Examples of behaviors that do not meet this standard:

- Consistently interrupt, show disrespect toward, ignore or belittle people.
- Use or display inappropriate language (profanity, obscenities, hate speech) with students, faculty, staff, and/or other professionals.
- Consistently make disruptive, rude, argumentative, confrontational or intimidating comments in a classroom or professional setting.

## **Classroom**

The classroom (in-person or online) should be an environment that fosters learning and sharing ideas. This type of environment works best when students arrive to class on time, prepared, and with an open mind. It is vital to the learning process that each student demonstrates respect for the instructor, classmates, and course content.

Examples of behaviors expected when participating in activities associated with W. P. Carey School of Business:

- Address, with the appropriate faculty member or administrator, any instance in which there is a suspicion or knowledge of an academic integrity violation or professional misconduct by a student or faculty member.
- Unless it is appropriate for the class activity, silence all electronic devices when you enter the classroom.
- Respect your professors, teaching assistants, and peers by refraining from disruptive behavior such as engaging in non-classroom related activities during class time.

Examples of behaviors that do not meet this standard:

- Failure to complete or follow through on projects and/or commitments on time and by deadlines.
- Consistently disparaging of professional development activities or academic learning.
- Disruptive or inappropriate behavior, including consistent absence or excessive tardies to class(es) without an excusable reason.

## **Co-curricular & Career**

Co-curricular conduct — behavior beyond the classroom — including appearance, behavior, and online presence has far-reaching effects. Faculty, employers, recruiters, and future professional peers may form positive or negative perceptions based on what they see or hear.

W. P. Carey students should conduct themselves as professionals with integrity in the classroom, in the workplace, and in associated activities.

Examples of behaviors expected when participating in activities associated with W. P. Carey School of Business:

- Act as a responsible group member: attend meetings and contribute equitably to discussions, workload, and presentations.
- Demonstrate respect and care for University property.
- Honor appointments with faculty, staff, advisors, recruiters, and employers.
- Understand that employers may search social media sites when making hiring decisions.

Examples of behaviors that do not meet this standard:

- Violation of school, university, or workplace policies, or the law.
- Failure to honor commitments to attend events, which includes arriving on time and dressing appropriately.
- Dressing in attire that could be considered inappropriate for the event, classroom, or workplace.
- Misuse of electronic media, using threatening or self-destructive behaviors.
- Disruptive or inappropriate behavior during experiential learning opportunities, such as conferences, field studies, international travel, etc.

## **Technology**

Use of personal or public desktops, tablets, laptops, cell phones, and other electronic devices while engaging in university business should be conducted in a respectful and professional manner.

Examples of behaviors expected when participating in activities associated with W. P. Carey School of Business:

- Be mindful of using technology in academic and non-academic settings (meetings, internships, at the workplace, and/or University sponsored events).
- Respect public workstations during use. Ensure space is clean and operable for future use and report faulty equipment to appropriate staff.

Examples of behaviors that do not meet this standard:

- Use of devices that are distracting, and/or impede safe movement of others through classroom and non-classroom spaces (use of cords, wall plugs, etc.).
- Inappropriate use of university equipment for personal use or gain.

Every interaction with fellow students, faculty, staff, alumni and recruiters develops your personal reputation and brand. We expect students to follow our Student Code of Conduct and our Graduate Professionalism Policy whenever they are representing themselves as a student of the W. P. Carey School of Business both inside and outside of the classroom.

Students accused of violating the Graduate Professionalism Policy will attend a meeting with the Associate Dean of Graduate Programs, or designee, to discuss the allegations. After this meeting, the student will be informed of whether or not they have violated the policy and if so, what sanctions will be applied.

- The School may impose sanctions at any point in this process. Sanctions may include being placed on academic probation, mandatory follow-up meetings, prohibited

participation in the following: W. P. Carey Graduate Programs Clubs & Organizations, serving in a student leadership role, participation in Convocation and/or graduation events or other extracurricular opportunities, or a recommendation for dismissal from the program.

In all instances of misconduct, including egregious behavior, these may be reported to the [Dean of Students Office](#), [Student Rights & Responsibilities](#), [Office of University Rights & Responsibilities](#) or [Academic Integrity Officer](#) to be investigated consistent with the relevant policies and procedures.

This policy is meant to augment the Arizona State University Student Code of Conduct. All students are expected to be familiar with both the Student Code of Conduct and Professionalism Policy and violations of either or both may be investigated within W. P. Carey School of Business and other offices as detailed above.

## **Student Resources**

Arizona Board of Regents Student Code of Conduct  
<https://eoss.asu.edu/dos/srr/codeofconduct>

Arizona State University Academic Integrity Policy  
<https://provost.asu.edu/academic-integrity/policy>

## **2024-2025 Master of Business Administration Academic Policies**

**PROGRAMS:** Full-time Master of Business Administration, Evening Master of Business Administration, Online Master of Business Administration, Executive Master of Business Administration, Fast-Track Master of Business Administration

The academic records of graduate students are reviewed at the completion of each course to ensure that satisfactory progress and minimum standards are being met. Students must complete required courses in the order specified for the Master of Business Administration (MBA) degree. It is each student's responsibility to understand how this policy may impact his/her ability to complete the MBA degree. W. P. Carey School of Business Graduate Programs reserves the right to enforce the academic policies outlined below.

**DEGREE REQUIREMENTS SUMMARY:** To be eligible for a degree from the Graduate College, master's degree students must maintain Satisfactory Academic Progress and achieve the benchmarks and requirements set by the individual degree programs as well as the Graduate College. These, as well as all other Graduate College policies, can be found in the [ASU Graduate Policies and Procedures](#).

### **Satisfactory Academic Progress**

1. Maintain a minimum 3.00 for all GPAs.

- a. The iPOS GPA is calculated on all courses that appear on the student's approved iPOS (with the exception of LAW and Transfer credits). This includes courses taken as an undergraduate student that are added to an iPOS for an Accelerated Master's.
  - b. Cumulative ASU GPA represents all courses completed at ASU during the graduate career. This includes graduate and undergraduate courses taken as a degree-seeking or non-degree seeking graduate student and any courses taken at ASU after conferral of a bachelor's degree.
  - c. The Overall Graduate GPA is based on all courses numbered 500 or higher that appear on the transcript after admission to a graduate program or graduate non-degree. This includes shared coursework if in an approved accelerated bachelor's/master's program.
  - d. Courses with grades of "D" (1.00) and "E" (0.00) cannot appear on the iPOS but will be included when calculating the Graduate GPA. Courses with an "I" grade cannot appear on the iPOS.
2. Satisfy all requirements of the graduate degree program.
  3. Satisfy the maximum time limit for graduation from the student's graduate degree program, as denoted in the program handbook.
  4. Successfully complete the culminating experience (e.g. capstone/thesis equivalency course, MGT 589) with a grade of B (3.00) or higher.
  5. Graduate students must remain continuously enrolled in their degree program. Failing to do so without a Graduate College approved *Leave of Absence* is considered to be a lack of academic progress and could result in discontinuation from the program.

A student who fails to make satisfactory progress in pursuit of the MBA degree will be provided notice from the W. P. Carey Graduate Programs Office, Program Operations department as soon as the applicable grade(s) have been identified.

**COURSE COMPLETION REQUIREMENT:** A student must complete all W. P. Carey MBA Program courses as scheduled.

- a) A student who withdraws from a W. P. Carey MBA Program course will receive a "W" and will not be permitted to continue coursework as scheduled. A student who wishes to withdraw from a W. P. Carey MBA Program course should contact the Program Operations Coordinator to discuss options, policies, and processes.
- b) Upon receipt of an [Incomplete \(grade of an "I"\)](#) in any course, a student must submit to the Program Operations coordinator a [written plan](#), mutually agreed upon with the instructor and approved by the faculty director of the program. The coursework must be completed prior to the start of the next term.
- c) Due to the lockstep nature of the MBA, failure to complete the course as outlined in the agreement may result in a recommendation for discontinuation or dismissal.

**PROBATION:** A W. P. Carey MBA student shall be placed on probation when the student:

- a) receives a “C+” (2.33) or “C” (2.00) in any course applicable to MBA degree requirements (courses and GPAs), and/or
- b) achieves a Cumulative ASU GPA or ASU Graduate GPA or Plan of Study (POS) grade point average (GPA) below 3.00, and/or
- c) has a significant or repeated violation of the [W. P. Carey School of Business Graduate Professionalism Policy](#), [ASU Academic Integrity](#), or [Student Code of Conduct](#).

A student on probation must work with his/her/their Program Operations coordinator to develop an academic performance improvement plan that includes the conditions and timeframes for making satisfactory academic progress in his/her/their degree program. A student on probation is allowed to complete coursework to bring his/her/their grades to an acceptable level (3.0 or above) by the end of the program.

**DISCONTINUATION:** A student shall be discontinued from the MBA program when the student receives:

- a “D” (1.00) or “E” (0.00) in any course applicable to MBA degree requirements (courses and GPAs) while not on probation, or
- a grade below “B” (3.00) on the thesis equivalency course, or
- an “I” grade and fails to complete coursework as outlined in the agreement.

A student who is discontinued must either enroll in MGT 595 Continuing Registration or have an approved leave of absence. A student must then resume his/her/their program as agreed and will be placed on probation upon return.

Students who fail to maintain continuous enrollment must be readmitted to the program under the degree requirements and policies in effect at the time of the new admission date.

**DISMISSAL:** A student shall be recommended for dismissal from the MBA program and will not be permitted to continue course work when the student:

- receives a third “C+” (2.33) or “C” (2.00) or lower grade in any core course applicable to MBA degree requirements (courses and GPAs), and/or
- is on academic probation and receives a “D” (1.00) or “E” (0.00) in any course applicable to MBA degree requirements (courses and GPAs), and/or
- is on academic probation and receives a grade below “B” (3.00) in the thesis equivalency course, and/or
- returns from discontinuation and receives a grade below “B-” (2.67) in any course applicable to MBA degree requirements (courses and GPAs), and/or
- has significant or repeated violation of the [W. P. Carey School of Business Graduate Professionalism Policy](#), [ASU Academic Integrity](#), or [Student Code of Conduct](#).

**GRADE APPEAL POLICY:** Student academic grade grievance procedures in the W. P. Carey School of Business normally consider matters where the relief sought is a change of a final



grade. Formal grievance petitions must be submitted no later than ten business days after the start of the next academic term; the process and decision on the grade grievance will be completed by the end of that term. Unless dismissed, a student may continue coursework during the appeal process.

Grounds for a grade appeal:

- Error in calculating the final grade for the course (e.g. arithmetic error)
- The criteria for determining the final grade were changed from what was specified in the syllabus (e.g. 4 quizzes were given instead of 5 or weights of assignments were changed)
- The evaluation system was not consistently and fairly applied to all students (e.g. Student A and Student B reported the same answer but had different scores for the assessment item)

**Grade appeal process** (informal and formal):

Informal process

- If the student has determined his/her/their grade appeal meets one of the three reasons to progress, the first step is to meet with the course instructor to resolve the complaint. The discussion should focus on the assignment(s) in question and how the change from the request would result in a grade change.
- If a resolution cannot be reached with the instructor, the student discusses the grievance with their program's Faculty Director. The Faculty Director notifies the Department Chair of the escalated grade appeal and if applicable, collaborates with the Department Chair on resolution.
- In instances of a conflict of interest, for example if the teaching faculty and Faculty Director are the same person, if a resolution cannot be reached, the student should continue to escalate the grievance procedure to the next level.

Formal process

- If after meetings are held with both the course instructor and Faculty Director/Department Chair, the appeal is not resolved, the student would submit a report to the [grade appeal site](#), detailing the reasons for the appeal and identifying under which grounds (from above) the appeal falls. The student would then meet with the Office of Academic Excellence to hear the dispute. Use the link below to schedule a meeting with the Office of Academic Excellence: [https://calendly.com/academic\\_excellence](https://calendly.com/academic_excellence)
- If it is determined the dispute cannot be resolved to satisfaction, a formal committee maybe called to hear the complaint. Student grade appeals must be processed by commencement or in the regular semester immediately following the issuance of the grade in dispute (fall or spring commencements only), regardless of whether the student is enrolled at the university.

**ACADEMIC INTEGRITY REQUIREMENT:** A student who engages in academic misconduct while attending a W. P. Carey graduate program will receive strict penalties as outlined in ASU's academic integrity policy. Those penalties ordinarily will range from a letter reduction in final course grade to expulsion from the program and School of Business. The penalty will be decided by the course faculty member and the Office of Academic Affairs. All allegations of academic misconduct must be reported to program administrators. Any subsequent act of



academic misconduct, regardless of severity, will result in dismissal from the program and the School of Business.

The [ASU student academic integrity policy](#) lists violations in detail. These violations fall into five broad areas that include but are not limited to:

1. Cheating on an academic evaluation or assignment
2. Plagiarizing
3. Academic deceit, such as fabricating data or information
4. Aiding academic integrity policy violations and inappropriately collaborating
5. Falsifying academic records

#### **TUITION REFUND POLICIES:**

- [ASU Tuition Refund Policy](#)
- [W. P. Carey Program Tuition Refund Policy](#)

#### **GRADUATE COLLEGE POLICIES:**

<https://graduate.asu.edu/current-students/policies-forms-and-deadlines/policy-manuals>

#### **DEFINITIONS AND SPECIFIC ASU POLICIES:**

**Probation:** An official warning that a student is not progressing academically as required by the program/university. A student on probation is allowed to continue coursework.

**Discontinuation:** Requires a student to take time off from the program based on academic performance. The student will restart the program according to the discontinuation agreement between the student and the Sr. Associate Dean. Upon return to his/her/their program, the student will be placed on academic probation.

**Dismissal:** A student who is dismissed is no longer matriculated and will not be allowed to continue coursework. To be subject to dismissal, a student must first be placed on academic probation.

**Continuous Enrollment:** Once admitted to a graduate degree program or graduate certificate program, students must maintain continuous enrollment and be registered for a minimum of one credit hour during all phases of their graduate education, including the terms in which they are admitted and graduate. Failing to do so without a Graduate College approved Leave of Absence is considered to be a lack of academic progress.

**Leave of Absence:** Graduate students planning to discontinue registration for a semester or more must submit a Leave of Absence request via their Interactive Plan of Study (iPOS). This request must be submitted and approved before the anticipated semester of non-registration. Students may request a maximum of two semesters of leave during their entire program. A student with a Graduate College approved Leave of Absence is not required to pay tuition and/or fees, but in turn, is not permitted to place any demands on university faculty or use any university resources. These resources include university libraries, laboratories, recreation facilities, or faculty time. Having an approved Leave of Absence by the Graduate College will enable students to re-enter their program without reapplying to the university.

**Plan of Study:** Courses needed to meet the graduate degree requirements, composed of core and elective courses. Students are advised to consult with a Program Operations coordinator regarding their plan of study.

**Thesis Equivalency Course:** MGT 589 Strategic Management is the thesis equivalent course for the MBA degree. Students must receive a grade of B (3.00) or better to pass and fulfill degree requirements.

**Voluntary Withdrawal from a Graduate Program:** If a student wishes to withdraw from a graduate program, the student should complete the [Voluntary Withdrawal form](#). Information on other types of Withdrawal (i.e. medical withdrawal, compassionate leave), can be found at: <https://students.asu.edu/drop-add>.

**International Enrollment Policies:** F-1 and J-1 students are required to maintain full-time enrollment status (9 credit hours per semester). Academic integrity violations, withdrawal, dismissal, and/or discontinuation from a degree program can have consequences regarding visa status. Federal guidelines on visa status supersede W. P. Carey graduate program academic policies. For any visa status questions, contact the [International Students and Scholars Center \(ISSC\)](#) at ASU at (480) 727-4776 or [issc@asu.edu](mailto:issc@asu.edu).

**Academic Term:** The academic term is determined by your program:

- Master of Business Administration Online - semester (Fall, Spring, Summer)
- Master of Business Administration, Full-time, Evening, Fast-Track & Executive - quarter

## W. P. CAREY TUITION REFUND POLICY

<https://gradstudents.wpcarey.asu.edu/student-resources/policies>

The following Program Tuition Refund Policy applies to all students taking graduate coursework at the W. P. Carey School of Business. The terms and conditions of this policy are subject to change at any time without notice. Any revisions to this policy will be effective immediately upon Assistant Dean's approval and applicable to all students.

### TUITION REFUND POLICIES:

- [ASU Tuition Refund Policy](#)
- [W. P. Carey Program Tuition Refund Policy](#)

## Fall and Spring Semester Classes

Course Type	100% Tuition Refund Period*
Sessions A & B	One week
Dynamically Dated Classes	One week

Session C	First two weeks of the semester
-----------	---------------------------------

## Summer Session Classes

Course Type	100% Tuition Refund Period*
Sessions A, B, C	First five days of the summer session
Dynamically Dated Classes	First five days of the summer session

**Students are not eligible for a refund of W. P. Carey Program Tuition after the 100% refund period.**

\*The 100% refund period begins on the class start date.

### Medical or Compassionate Withdrawals

Students who are eligible for a refund of ASU Graduate Tuition and Fees due to an approved Medical or Compassionate Withdrawal will receive the same percentage of refund of Program Tuition based on the terms and conditions set forth on the approved Request for Documented Medical/Compassionate Withdrawal form.

### W. P. Carey Scholarship Cancellation Policy

This policy pertains to all scholarships awarded through the Graduate Programs Office at the W. P. Carey School of Business.

#### Voluntary or Involuntary Withdrawal

W. P. Carey scholarship recipients who have been approved for a Voluntary or Involuntary Withdrawal from a program of study must adhere to the following Scholarship Cancellation Policy:

- Withdrawal during the 100% Tuition Refund Period
- Will result in 100% cancellation of all W. P. Carey scholarships
- Withdrawal after the 100% Tuition Refund Period
- All W. P. Carey scholarships will be adjusted accordingly, if necessary, to prevent any refund of scholarship dollars as a result of a student's withdrawal from a program of study
- All future scheduled scholarship disbursements will be canceled
- All scholarship offers made prior to a student's withdrawal from a program will be null and void
- Should a student apply for admission after a previous program withdrawal, they will be considered for scholarship opportunities based on their most recent application for admission

#### Leave of Absence

Scholarship offers made prior to a student's Graduate College approved Leave of Absence are not guaranteed to renew upon a student's return to studies. Students must submit an appeal to request renewal of any previous scholarship offers.

Appeal process:

- Submit a letter of appeal requesting renewal of previous scholarship offers to:  
 Graduate Admissions  
 W. P. Carey School of Business  
 Attn: Sr. Associate Director of Admission & Financial Services  
 McCord Hall  
 PO Box 874906  
 Tempe, AZ 85287-4906  
 Letters of appeal should include a student's full name and ASU student ID number.  
 Students can also email their appeal letter to [wpcareymasters.finaid@asu.edu](mailto:wpcareymasters.finaid@asu.edu).
- Appeals will be reviewed by the Sr. Associate Director of Admission & Financial Services
- Decisions will be sent to a student's ASU student email within 7-10 business days from the time their appeal letter is received

## STUDENT RESOURCES

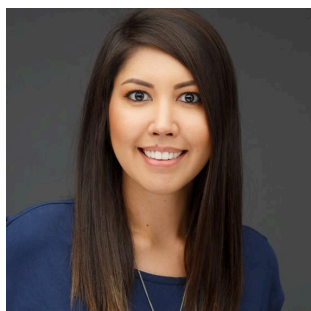
Arizona Board of Regents Student Code of Conduct  
<https://eoss.asu.edu/dos/srr/codeofconduct>

Arizona State University Academic Integrity Policy  
<https://provost.asu.edu/academic-integrity/policy>

## Graduate Program Operations

The program operations team works with you from orientation through graduation, dedicated to your academic success. Your program coordinator/manager will advise you on your degree requirements and academic policies while supporting events and activities to keep you and your peers connected and engaged with the program.

<https://gradstudents.wpcarey.asu.edu/academics/evening-mba/program-contacts>



### **Liz Sortais**

*Director*

*Professional MBA Programs*

*W. P. Carey School of Business*

*[esortais@asu.edu](mailto:esortais@asu.edu)*



## **Audrey Chambers**

*Program Manager, Evening MBA*

*W. P. Carey School of Business*

*audrey.chambers.1@asu.edu*

## **W. P. Carey Career Services Center**

You came to business school to advance your career with a W. P. Carey Master's Degree. A comprehensive program and experienced professional coaches in Career Management and Employer Engagement (CMEE) will help you build a solid plan with a focus on the critical skills for connecting with the employers you want to get the attention of.

### **Personal Attention, Transformative Results**

At W. P. Carey, business is personal. When it comes to your career management, we will work with you every step of the way. Take advantage of all the resources available to you in this partnership, ranging from courses to a host of resources for you to opt into and utilize as you:

- Develop and refine your goal-setting and job-search skills
- Identify your strengths, interests, skills, ideal corporate cultures, and motivating incentives
- Seek feedback and guidance on all of your communications from networking to interviewing and signing your offer
- Build a framework to successfully manage your career and evolve your talents throughout your entire career beyond B-school

## **Graduate Student Clubs and Organizations**

Clubs and Organizations provide the opportunity to network with students across graduate business programs who have similar interests. These clubs and organizations bring in guest speakers and organize activities to enhance your classroom experience while providing an opportunity to grow professionally.

Joining a club is easy! Log into SunDevilSync

(<https://orgsync.com/login/arizona-state-university>) to search for clubs. For more information and a list of W. P. Carey student organizations, visit:

<https://gradstudents.wpcarey.asu.edu/student-life/clubs-organizations>

## **Student Health and Wellness Resources**

[ASU Counseling Services](#) is now available anytime, anywhere! Services have now been expanded to include 24/7 support. Sessions are available as open chat and telehealth. Visit the ASU Counseling Services site for more information.

[“Graduate Wellness Resources”](#) – This resource is a one-page guide to Financial, Social, Emotional, and Physical Health and Wellness Resources for ASU Graduate Students was developed by the Graduate and Professional Student Association (GPSA).

[“10 Best Practices in Graduate Student Wellbeing”](#) – Within this site are proven ways to help graduate students better care for themselves under the increasing demands of graduate school.

## Facilities Resources

[McCord Hall](#) - McCord Hall is home to master's programs within the W. P. Carey School of Business. The building also accommodates Graduate Programs Office Administration which includes Recruitment, Financial Services, and Program Operations staff which support graduate students, as well as undergraduate Carey Academy Suite and team rooms. The hall features state-of-the-art classrooms and computer labs, as well as specialized industry spaces, executive education facilities, conference/seminar rooms, interview rooms, and study areas for undergraduate, graduate, and executive students. The four-story building emphasizes sustainability, with a minimum goal of LEED silver certification.

Team Rooms - Team rooms in McCord Hall are available for groups of two to six students who are working on a project or studying as a group. More information about team rooms, including a reservation link, may be found at

<https://gradstudents.wpcarey.asu.edu/student-resources/team-rooms>.

## Scholarships and Financial Aid

W. P. Carey awards a limited number of scholarships based on academic performance, leadership activities, community involvement, and future goals. These scholarships are extremely competitive. A short application is required for consideration and must be completed after admission has been awarded. Domestic and U.S. permanent residents must complete the Free Application for Federal Student Aid (FAFSA). Contact your recruiter for information on how to apply.

ASU Scholarships: <https://students.asu.edu/scholarships>

Outside Scholarships: [www.fastweb.com](http://www.fastweb.com)

There are two federal student loans available to students who qualify: [Direct Unsubsidized Loan](#) and [Direct Graduate PLUS Loan](#). Students may explore private [student loans](#).

To learn more about your options please visit:

<https://gradstudents.wpcarey.asu.edu/financial-services/funding-options>

## Graduate Student Funding Opportunities

Explore a [variety of funding options](#) available to you! In addition to Awards and Scholarships, explore [other opportunities for funding your graduate degree](#). Utilize features like the tuition calculator and [Financial Aid and Scholarship Services](#) to become more informed about the cost of your college education.

## **Travel Grants and GPSA**

To learn more about what GPSA is and how they support and fund graduate student programs, groups, and travel through the use of grants visit <https://gpsa.asu.edu/funding/> and explore the number of grants available.